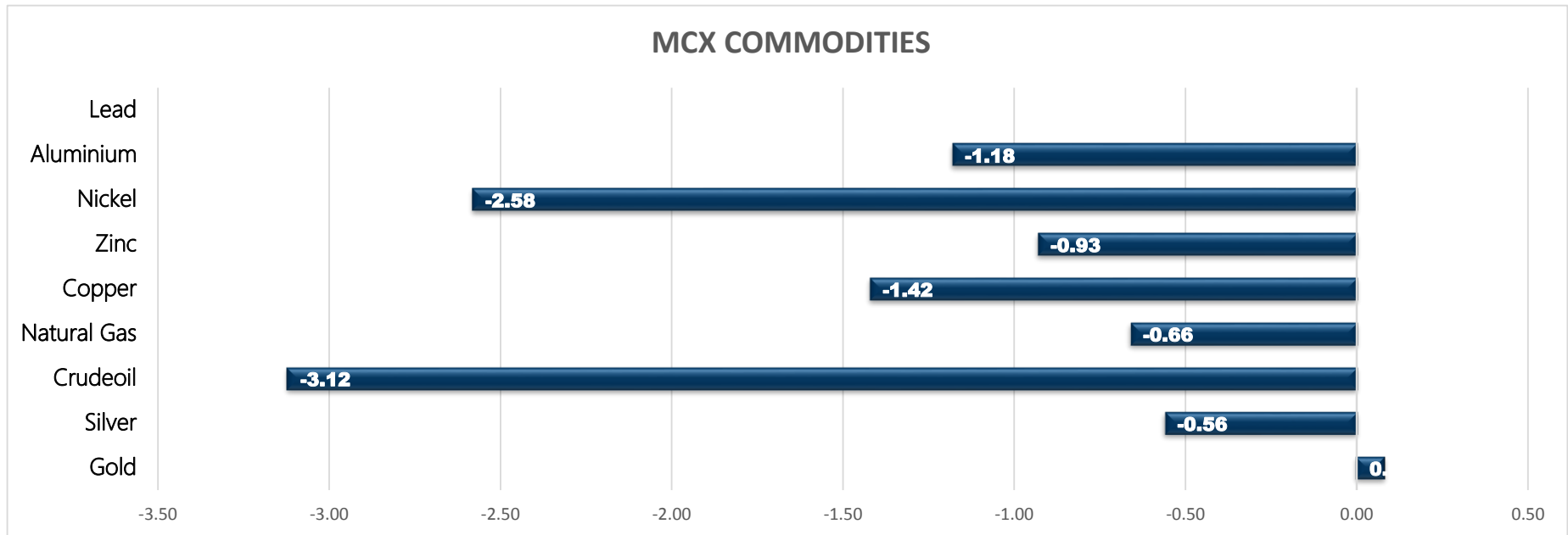


Commodity	Close	% Change
Gold	47169.00	0.08
Silver	62133.00	-0.56
Crudeoil	4722.00	-3.12
Natural Gas	284.50	-0.66
Copper	684.40	-1.42
Zinc	244.85	-0.93
Nickel	1398.50	-2.58
Aluminium	204.75	-1.18
Lead	179.15	0.00

Commodity	Ltp*	% Change
Gold\$	1783.80	0.21
Silver\$	23.23	0.23
Crudeoil\$	63.69	-2.70
Natural Gas\$	3.83	-0.57
Lme Copper	8985.50	1.13
Lme Zinc	2965.00	0.71
Lme Nickel	18610.00	1.00
Lme Lead	2266.00	0.44
Lme Aluminium	2565.50	0.85

Economical Data	
EUR	German PPI m/m



MCX MARKET SYNOPSIS

Contract	Open	High	Low	Close	Rs Chg	% Chg	Volume	OI	OI % Chg
Copper Aug	688.50	688.50	673.00	684.40	-9.85	-1.42	11960	4996	-6.86
Copper Sep	695.50	695.50	677.00	686.25	0.00	0.00	1572	1354	0.00
Zinc Aug	244.55	246.60	242.95	244.85	-2.30	-0.93	2695	943	-16.92
Zinc Sep	239.60	244.00	239.45	242.30	0.00	0.00	483	572	0.00
Nickel Aug	1417.00	1425.80	1393.40	1398.50	-37.10	-2.58	6970	1589	0.82
Nickel Sep	1402.30	1419.60	1386.00	1390.60	0.00	0.00	863	530	0.00
Aluminium Aug	205.50	206.00	204.10	204.75	-2.45	-1.18	2001	1360	-9.15
Aluminium Sep	204.05	204.20	202.00	203.15	0.00	0.00	486	835	0.00
Lead Aug	178.50	179.30	177.55	179.15	0.00	0.00	1507	918	-7.37
Lead Sep	177.20	177.65	176.20	177.30	0.00	0.00	100	231	0.00

MCX PIVOT

Contract	Sup - 3	Sup - 2	Sup - 1	Pivot	Res - 1	Res - 2	Res - 3	OI Status
Copper Aug	660.00	666.50	675.50	682.00	691.00	697.50	706.50	Long Liquidation
Zinc Aug	239.30	241.10	243.00	244.80	246.70	248.50	250.40	Long Liquidation
Nickel Aug	1353.60	1373.50	1386.00	1405.90	1418.40	1438.30	1450.80	Fresh Selling
Aluminium Aug	202.10	203.10	204.00	205.00	205.90	206.90	207.80	Long Liquidation
Lead Aug	176.30	176.90	178.10	178.70	179.90	180.50	181.70	Long Liquidation

INTERNATIONAL MARKET SYNOPSIS

Commodity	Open	High	Low	Ltp*	Chg	% Chg	LME STOCKS	
LME Copper	9051.50	9109.00	8740.00	8885.00	100.50	1.13	LME Copper	0
LME Zinc	2983.50	2998.00	2916.50	2944.00	21.00	0.71	LME Zinc	-2875
LME Nickel	18910.00	18950.00	18345.00	18425.00	185.00	1.00	LME Nickel	-624
LME Lead	2294.00	2312.00	2241.00	2256.00	10.00	0.44	LME Lead	-400
LME Aluminium	2563.00	2572.00	2516.00	2544.00	21.50	0.85	LME Aluminium	-5425

INTERNATIONAL PIVOT

Commodity	Sup - 3	Sup - 2	Sup - 1	Pivot	Res - 1	Res - 2	Res - 3
LME Copper	8345	8542	8714	8911	9083	9280	9452
LME Zinc	2826	2871	2908	2953	2989	3034	3071
LME Nickel	17592	17968	18197	18573	18802	19178	19407
LME Lead	2156	2199	2227	2270	2298	2341	2369
LME Aluminium	2460	2488	2516	2544	2572	2600	2628

COPPER

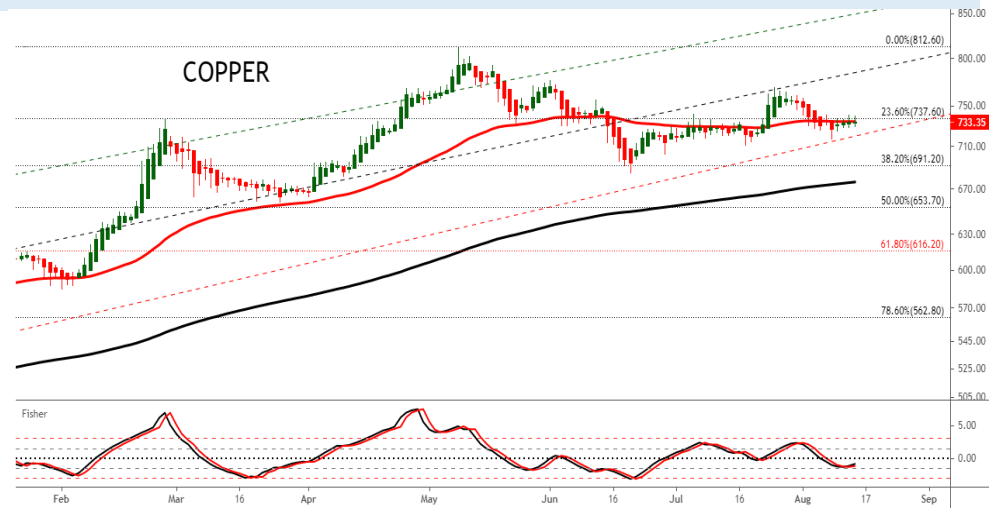
Copper trading range for the day is 666.5-697.5.

Copper prices slumped amid a stronger dollar, demand concerns from the resurgence in Covid-19 and easing supply disruptions.

China July refined copper output up 10.4% y/y

Yangshan copper premium leaped to \$72 per tonne, its highest since March 3, indicating improving demand

Warehouse stock for Copper at LME was at 245125mt that is unchange mt.



ZINC

Zinc trading range for the day is 241.1-248.5.

Zinc prices dropped amid the cooled down market sentiments by the uncertainty of economic recovery.

Fed Chairman Powell warned about the uncertainty to economic recovery, and stated that the Fed tools are limited.

The power curtailment has been loosened in Guangxi, Hunan, and Yunnan, but the affected output in August is still higher than expected.

Warehouse stock for Zinc at LME was at 228350mt that is down by -2875mt.



NICKEL

Nickel trading range for the day is 1373.5-1438.3.

Nickel prices trended down amid bearish non-ferrous metals caused by less-than-expected retail sales data in July and rising US dollar index.

UK inflation data showed a sharper slowdown than expected - though analysts said investors were focused more on the state of the labour market.

British inflation fell to the Bank of England's 2% target last month.

Warehouse stock for Nickel at LME was at 198486mt that is down by -624mt.



ALUMINIUM

Aluminium trading range for the day is 203.1-206.9.

Aluminium prices dropped as investors became more worried about a slowing economic growth, depressing risk appetite.

Fed Chairman Powell warned about the uncertainties in economic outlook against the repeated COVID-19 pandemic

China's aluminium imports in July rose 6.1% from the previous month, hitting their highest since September 2020.

Warehouse stock for Aluminium at LME was at 1309700mt that is down by -5425mt.



COPPER PRICE MOVEMENT SINCE 2012

Year	JAN	FEB	MAR	APR	MAY	JUN	JUL	AUG	SEP	OCT	NOV	DEC	Grow th
2012	417.15	417.70	431.65	443.90	420.25	429.40	422.55	424.30	441.05	419.70	436.30	443.75	37.75
	2.75	0.13	3.34	2.84	-5.33	2.18	-1.60	0.41	3.95	-4.84	3.96	1.71	9.30
2013	440.05	418.20	410.20	381.00	413.05	406.60	421.55	486.95	466.40	452.50	444.40	468.55	24.80
	-0.83	-4.97	-1.91	-7.12	8.41	-1.56	3.68	15.51	-4.22	-2.98	-1.79	5.43	5.59
2014	444.95	443.20	404.15	403.00	410.80	422.35	436.10	417.95	416.00	414.70	390.75	399.10	-69.45
	-5.04	-0.39	-8.81	-0.28	1.94	2.81	3.26	-4.16	-0.47	-0.31	-5.78	2.14	-14.82
2015	342.85	371.80	378.45	404.60	386.65	368.75	335.40	341.75	342.70	336.55	301.15	315.50	-83.60
	-14.09	8.44	1.79	6.91	-4.44	-4.63	-9.04	1.89	0.28	-1.79	-10.52	4.77	-20.95
2016	311.60	322.00	321.25	334.20	312.50	327.15	329.70	305.60	328.55	326.05	396.05	372.90	57.40
	-1.24	3.34	-0.23	4.03	-6.49	4.69	0.78	-7.31	7.51	-0.76	21.47	-5.85	18.19
2017	406.10	397.85	380.75	367.60	368.75	385.20	410.65	434.55	427.95	444.70	431.40	466.00	93.10
	8.90	-2.03	-4.30	-3.45	0.31	4.46	6.61	5.82	-1.52	3.91	-2.99	8.02	24.97
2018	450.90	446.00	436.80	449.40	457.05	446.15	430.15	414.00	452.95	435.70	433.10	407.75	-58.25
	-3.24	-1.09	-2.06	2.88	1.70	-2.38	-3.59	-3.75	9.41	-3.81	-0.60	-5.85	-12.50
2019	437.60	464.70	451.05	450.30	404.50	411.05	444.15	443.95	438.05	437.95	432.60	441.25	33.50
	7.32	6.19	-2.94	-0.17	-10.17	1.62	8.05	-0.05	-1.33	-0.02	-1.22	2.00	8.22
2020	427.25	421.80	376.80	403.45	416.20	464.70	500.75	527.30	525.20	526.40	582.30	594.70	153.45
	-3.17	-1.28	-10.67	7.07	3.16	11.65	7.76	5.30	-0.40	0.23	10.62	2.13	34.78
2021	596.40	702.95	667.95	754.10	768.85	721.50	751.70						157.00
	0.29	17.87	-4.98	12.90	1.96	-6.16	4.19						26.40
Average	-1.25	2.69	-2.53	1.37	-0.91	0.67	3.00	1.32	-0.10	0.35	2.05	2.44	Average

ZINC PRICEMOVEMENTSINCE2012

Year	JAN	FEB	MAR	APR	MAY	JUN	JUL	AUG	SEP	OCT	NOV	DEC	Grow th
2012	105.60	104.00	102.85	107.10	107.15	103.95	103.20	100.60	110.45	99.30	110.55	111.45	13.00
	7.26	-1.52	-1.11	4.13	0.05	-2.99	-0.72	-2.52	9.79	-10.10	11.33	0.81	13.20
2013	113.95	111.05	102.90	110.50	106.30	109.70	109.55	128.25	117.80	118.25	116.00	129.05	17.60
	2.24	-2.54	-7.34	7.39	-3.80	3.20	-0.14	17.07	-8.15	0.38	-1.90	11.25	15.79
2014	122.80	130.95	119.05	123.95	122.40	132.45	144.55	142.90	141.10	143.40	138.00	137.20	8.15
	-4.84	6.64	-9.09	4.12	-1.25	8.21	9.14	-1.14	-1.26	1.63	-3.77	-0.58	6.32
2015	130.40	127.70	129.90	149.75	141.05	127.10	122.85	121.30	108.90	109.10	103.20	106.15	-31.05
	-4.96	-2.07	1.72	15.28	-5.81	-9.89	-3.34	-1.26	-10.22	0.18	-5.41	2.86	-22.63
2016	109.25	122.45	118.40	129.20	129.30	142.15	148.80	155.90	158.10	163.90	185.55	173.80	67.65
	2.92	12.08	-3.31	9.12	0.08	9.94	4.68	4.77	1.41	3.67	13.21	-6.33	63.73
2017	193.10	187.70	180.40	169.45	165.95	178.25	179.50	200.95	210.20	215.05	205.95	207.60	33.80
	11.10	-2.80	-3.89	-6.07	-2.07	7.41	0.70	11.95	4.60	2.31	-4.23	0.80	19.45
2018	228.60	227.75	214.10	211.75	209.05	202.15	180.40	176.10	186.65	192.60	180.20	171.95	-35.65
	10.12	-0.37	-5.99	-1.10	-1.28	-3.30	-10.76	-2.38	5.99	3.19	-6.44	-4.58	-17.17
2019	195.15	197.80	221.35	223.20	203.00	200.50	192.25	185.30	185.55	187.85	185.05	179.00	7.05
	13.49	1.36	11.91	0.84	-9.05	-1.23	-4.11	-3.62	0.13	1.24	-1.49	-3.27	4.10
2020	174.45	154.85	145.50	150.60	159.00	163.50	184.00	196.05	190.80	201.80	220.20	214.40	35.40
	-2.54	-11.24	-6.04	3.51	5.58	2.83	12.54	6.55	-2.68	5.77	9.12	-2.63	11.81
2021	205.90	219.55	220.00	232.45	237.35	240.20	248.15						33.75
	-3.96	6.63	0.20	5.66	2.11	1.20	3.31						11.81
Average	0.89	1.16	-2.09	2.90	-2.20	0.65	2.74	2.59	-0.91	1.82	0.66	0.77	Average

NICKEL PRICE MOVEMENT SINCE 2012

Year	JAN	FEB	MAR	APR	MAY	JUN	JUL	AUG	SEP	OCT	NOV	DEC	Growth
2012	1050.20	974.30	927.40	936.60	923.80	935.40	892.80	884.40	978.50	878.50	931.70	935.70	-56.50
	5.85	-7.23	-4.81	0.99	-1.37	1.26	-4.55	-0.94	10.64	-10.22	6.06	0.43	-5.69
2013	979.10	895.70	921.50	824.00	826.70	823.90	829.20	928.20	869.80	892.20	836.90	864.50	-71.20
	4.64	-8.52	2.88	-10.58	0.33	-0.34	0.64	11.94	-6.29	2.58	-6.20	3.30	-7.61
2014	855.80	902.80	945.50	1097.40	1139.60	1124.30	1130.40	1140.30	1016.80	971.00	996.80	945.70	81.20
	-1.01	5.49	4.73	16.07	3.85	-1.34	0.54	0.88	-10.83	-4.50	2.66	-5.13	9.49
2015	922.90	874.90	779.70	881.00	808.00	744.50	698.50	668.10	661.90	660.90	583.50	582.00	-363.70
	-2.41	-5.20	-10.88	12.99	-8.29	-7.86	-6.18	-4.35	-0.93	-0.15	-11.71	-0.26	-38.46
2016	579.80	577.60	549.10	629.10	568.50	636.40	700.00	651.20	703.30	696.30	751.20	706.00	169.20
	-0.38	-0.38	-4.93	14.57	-9.63	11.94	9.99	-6.97	8.00	-1.00	7.88	-6.02	29.07
2017	670.30	725.30	640.10	608.90	568.50	600.60	655.70	743.70	692.60	766.30	727.50	783.40	77.40
	-5.06	8.21	-11.75	-4.87	-6.63	5.65	9.17	13.42	-6.87	10.64	-5.06	7.68	10.96
2018	863.10	898.30	840.50	926.40	1024.40	1022.30	944.00	909.30	905.00	860.00	774.80	741.60	-41.80
	10.17	4.08	-6.43	10.22	10.58	-0.20	-7.66	-3.68	-0.47	-4.97	-9.91	-4.28	-5.34
2019	884.90	931.10	904.00	854.60	876.50	906.00	1013.50	1245.40	1216.80	1200.40	1005.50	1029.20	287.60
	19.32	5.22	-2.91	-5.46	2.56	3.37	11.87	22.88	-2.30	-1.35	-16.24	2.36	38.78
2020	943.80	901.00	860.10	922.60	940.40	975.00	1041.90	1135.70	1065.30	1142.70	1206.70	1212.20	183.00
	-8.30	-4.53	-4.54	7.27	1.93	3.68	6.86	9.00	-6.20	7.27	5.60	0.46	17.78
2021	1286.90	1367.70	1184.10	1316.90	1328.40	1363.90	1484.10						151.70
	6.16	6.28	-13.42	11.22	0.87	2.67	8.81						12.51
Average	3.37	1.29	-2.98	4.20	-3.04	0.58	3.21	3.12	-1.76	0.18	-3.13	1.80	Average

ALUMINIUM PRICE MOVEMENT SINCE 2012

Year	JAN	FEB	MAR	APR	MAY	JUN	JUL	AUG	SEP	OCT	NOV	DEC	Growth
2012	112.15	112.65	108.35	108.05	111.35	105.65	103.95	103.00	110.95	101.85	113.35	111.75	4.80
	4.86	0.45	-3.82	-0.28	3.05	-5.12	-1.61	-0.91	7.72	-8.20	11.29	-1.41	4.49
2013	110.50	105.40	103.65	100.10	105.95	105.05	105.85	122.10	113.15	112.55	106.75	109.20	-2.55
	-1.12	-4.62	-1.66	-3.42	5.84	-0.85	0.76	15.35	-7.33	-0.53	-5.15	2.30	-2.28
2014	103.90	107.00	104.00	106.75	107.65	111.20	121.45	126.70	119.20	126.85	128.35	116.00	6.80
	-4.85	2.98	-2.80	2.64	0.84	3.30	9.22	4.32	-5.92	6.42	1.18	-9.62	6.23
2015	113.45	112.40	111.95	121.40	108.75	104.95	102.00	107.15	102.60	94.40	96.35	100.15	-15.85
	-2.20	-0.93	-0.40	8.44	-10.42	-3.49	-2.81	5.05	-4.25	-7.99	2.07	3.94	-13.66
2016	103.80	111.25	98.90	111.25	104.00	110.55	108.30	107.20	110.55	115.95	118.00	117.20	17.05
	3.64	7.18	-11.10	12.49	-6.52	6.30	-2.04	-1.02	3.12	4.88	1.77	-0.68	17.02
2017	123.40	126.45	126.20	123.90	123.90	123.55	121.95	135.30	137.90	138.60	131.00	143.30	26.10
	5.29	2.47	-0.20	-1.82	0.00	-0.28	-1.30	10.95	1.92	0.51	-5.48	9.39	22.27
2018	141.65	140.50	130.65	148.50	154.15	149.70	141.40	150.10	145.90	143.95	137.20	128.15	-15.15
	-1.15	-0.81	-7.01	13.66	3.80	-2.89	-5.54	6.15	-2.80	-1.34	-4.69	-6.60	-10.57
2019	136.00	151.10	149.15	146.20	145.35	143.20	140.35	138.70	134.60	132.00	133.55	137.25	9.10
	6.13	11.10	-1.29	-1.98	-0.58	-1.48	-1.99	-1.18	-2.96	-1.93	1.17	2.77	7.10
2020	139.10	136.70	134.45	131.00	131.70	137.95	140.90	146.15	143.80	152.95	167.05	160.95	23.70
	1.35	-1.73	-1.65	-2.57	0.53	4.75	2.14	3.73	-1.61	6.36	9.22	-3.65	17.27
2021	162.25	173.50	176.65	193.70	196.65	198.75	206.75						45.80
	0.81	6.93	1.82	9.65	1.52	1.07	4.03						28.46
Average	0.81	2.06	-1.72	3.02	-0.60	-0.82	1.25	3.31	-0.75	-0.12	0.53	0.61	Average

GENERAL DISCLAIMERS

KEDIA ADVISORY

This Report is prepared and distributed by Kedia Stocks & Commodities Research Pvt Ltd. for information purposes only. The recommendations, if any, made herein are expression of views and/or opinions and should not be deemed or construed to be neither advice for the purpose of purchase or sale through KSCRPL nor any solicitation or offering of any investment /trading opportunity. These information / opinions / views are not meant to serve as a professional investment guide for the readers. No action is solicited based upon the information provided herein. Recipients of this Report should rely on information/data arising out of their own investigations. Readers are advised to seek independent professional advice and arrive at an informed trading/investment decision before executing any trades or making any investments. This Report has been prepared on the basis of publicly available information, internally developed data and other sources believed by KSCRPL to be reliable. KSCRPL or its directors, employees, affiliates or representatives do not assume any responsibility for, or warrant the accuracy, completeness, adequacy and reliability of such information / opinions / views. While due care has been taken to ensure that the disclosures and opinions given are fair and reasonable, none of the directors, employees, affiliates or representatives of KSCRPL shall be liable for any direct, indirect, special, incidental, consequential, punitive or exemplary damages, including lost profits arising in any way whatsoever from the information / opinions / views contained in this Report. The possession, circulation and/or distribution of this Report may be restricted or regulated in certain jurisdictions by appropriate laws. No action has been or will be taken by KSCRPL in any jurisdiction (other than India), where any action for such purpose(s) is required. Accordingly, this Report shall not be possessed, circulated and/ or distributed in any such country or jurisdiction unless such action is in compliance with all applicable laws and regulations of such country or jurisdiction. KSCRPL requires such recipient to inform himself about and to observe any restrictions at his own expense, without any liability to KSCRPL. Any dispute arising out of this Report shall be subject to the exclusive jurisdiction of the Courts in India.

For more details, please **contact:**

 +91 9323406035 / 9619551022

 info@kediaadvisory.com

 www.kediaadvisory.com

KEDIA STOCKS & COMMODITIES RESEARCH PVT LTD.
Mumbai, IN.

SEBI REGISTRATION NUMBER - INH000006156

